

# Australian National University



## Acton Campus — Site Inventory

Study Item/ Area	Sir Roland Wilson Building
Acton Campus Precinct	LIVERSIDGE Precinct
Building Nos. & Names	120 (Sir Roland Wilson Building)



Figure 1: Location of study area within the ANU Acton Campus site.

Heritage Ranking	Sir Roland Wilson Building—Neutral—Does not meet criteria for Commonwealth Heritage List
Heritage Listing	The Sir Roland Wilson Building is not individually listed on the Commonwealth Heritage List (CHL).
Condition—Date	The condition noted here is at November 2011. The Sir Roland Wilson Building and surrounding landscape continue to be well maintained for academic and office accommodation and are in reasonable condition.
Relevant Documentation	The Sir Rowland Wilson Building has no current relevant documentation.

### Context of the Buildings

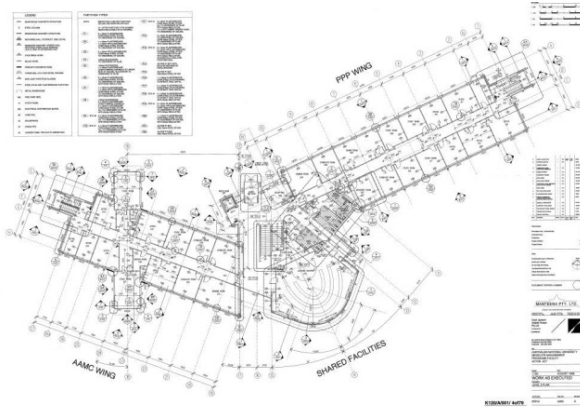


Figure 2: Original layout of the Sir Roland Wilson Building, 1998 (Source: ANU Drawing Office)

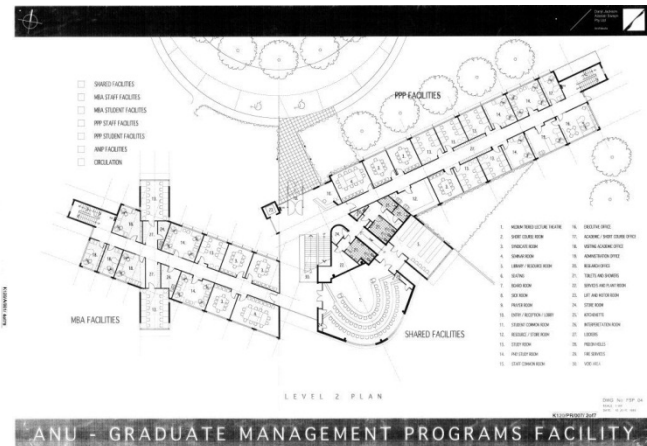


Figure 3: Initial proposal document for Sir Roland Wilson Building, April 1998. (Source: ANU Drawing Office)

### Brief Historical Overview

The Sir Roland Wilson Building was designed by Daryl Jackson Alistair Swayn Architects and constructed by Manteena Construction Company from 1998. It was completed in 1999. The plaque for the building was unveiled by Lady Wilson in April 1999 and the building was opened in August 1999 by Prime Minister John Howard.

It is currently occupied by Australia Asia Management, Humanities Research Centre (RSHA), the Freilich Foundation (RSHA), and the Institute for Professional Practice in Heritage and the Arts (RSHA) and the Research School of Humanities & the Arts (RSHA) – CASS and RSHA Directorate.

The Building was named after Sir Roland Wilson, a distinguished Australian lawyer, judge and social activist serving on the High Court of Australia between 1979 and 1989, and was the President of the Human Rights and Equal Opportunity Commission between 1990 and 1997.

The building's design is based on Feng Shui principles and as such is unique to the ANU campus.

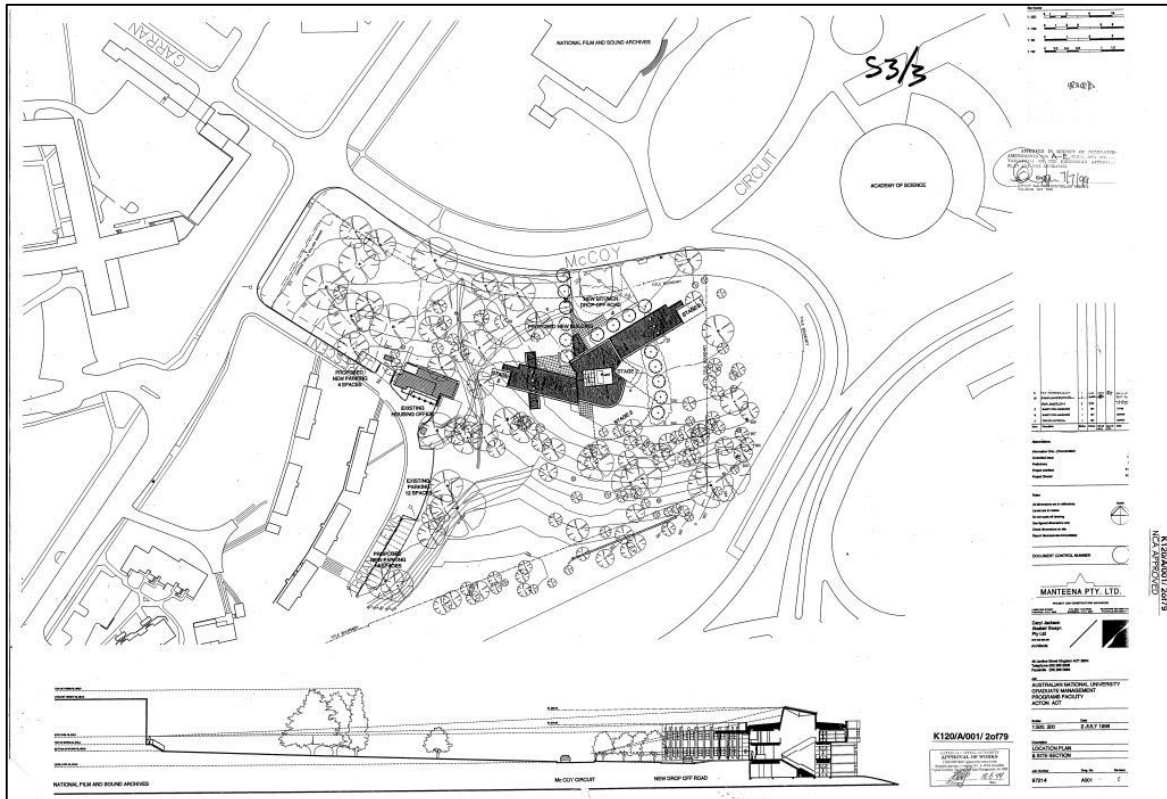


Figure 4: The original site plan of the Sir Roland Wilson Building in relation to its place in the landscape, 1998. (Source: ANU Drawing Office)

### Description of the Sir Roland Wilson Building

#### Buildings

The Sir Roland Wilson Building is constructed of concrete slab with steel frame. The external walls are clad with concrete panels. Windows are glass with aluminium frames of varying shapes and sizes. The entrance is security locked with card access required for entry. The interior consists of plasterboard cladding with carpeted floors.

The building has a collection of artworks in a range of styles and themes, and houses collection objects including Sir Roland Wilson's personal papers, desk and chair.

#### Landscape

The external area is landscaped with low shrub plantings in beds with grass lawns at the front of the building and natural vegetation growth at the rear. There is also a curved drive area at the entrance for vehicle access with accessible parking spaces provided. This is covered with asphalt and guttered in concrete.

There is also evidence of habitation by rabbits.

## Significance Assessment against the Commonwealth Heritage criteria

### Statement of Significance

N/A

Criteria	Assessment
<p><b>(a) Historic</b> The place has significant heritage value because of the place's importance in the course, or pattern, of Australia's natural or cultural history.</p>	<p>The Sir Roland Wilson Building does not meet CHL criterion (a) for historic values.</p>
<p><b>(b) Rarity</b> The place has significant heritage values because of the place's possession of uncommon, rare or endangered aspects of Australia's natural or cultural history.</p>	<p>The Sir Roland Wilson Building does not meet CHL criterion (b) for rarity values.</p>
<p><b>(c) Scientific</b> The place has significant heritage value because of the place's potential to yield information that will contribute to an understanding of Australia's natural or cultural history.</p>	<p>The Sir Roland Wilson Building does not meet CHL criterion (c) for scientific values.</p>
<p><b>(d) Representative</b> The place has significant heritage value because of the place's importance in demonstrating the principal characteristics of: A class of Australia's natural or cultural places; or A class of Australia's natural or cultural environments.</p>	<p>The Sir Roland Wilson Building does not meet CHL criterion (d) for representative values.</p>

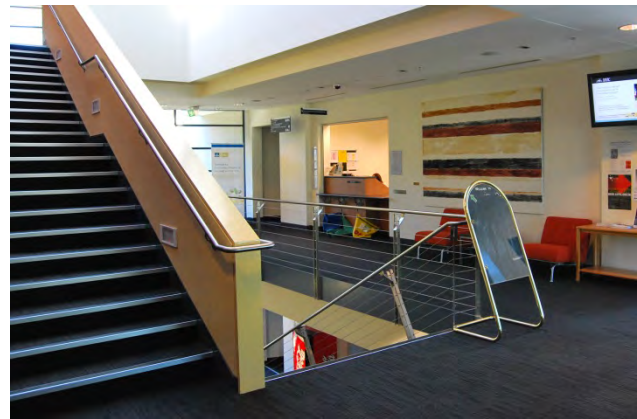
## Significance Assessment against the Commonwealth Heritage criteria

<p><b>(e) Aesthetic</b> The place has significant heritage value because of the place's importance in exhibiting particular aesthetic characteristics valued by a community or cultural group.</p>	<p>The Sir Roland Wilson Building does not meet CHL criterion (e) for aesthetic values.</p>
<p><b>(f) Creative/Technical</b> The place has significant heritage value because of the place's importance in demonstrating a high degree of creative or technical achievement at a particular period.</p>	<p>The Sir Roland Wilson Building does not meet CHL criterion (f) for creative/technical values.</p>
<p><b>(g) Social</b> The place has significant heritage value because of the place's strong or special association with a particular community or cultural group for social, cultural or spiritual reasons.</p>	<p>The Sir Roland Wilson Building does not meet CHL criterion (g) for social values.</p>
<p><b>(h) Associative</b> The place has significant heritage value because of the place's special association with the life or works of a person, or group of persons, of importance in Australia's natural and cultural history.</p>	<p>The Sir Roland Wilson Building does not meet CHL criterion (h) for associative values.</p>
<p><b>(i) Indigenous</b> The place has significant heritage value because of the place's importance as part of Indigenous tradition.</p>	<p>The Sir Roland Wilson Building does not meet CHL criterion (i) for Indigenous values.</p>

## Photographs



**Figure 5:** Front Entrance to the Sir Roland Wilson Building including airlock style doors. (Source: ANU Heritage Office 2011)



**Figure 6:** Foyer of Sir Roland Wilson Building with reception desk. Note the front entrance is on the first or middle floor of the building. (Source: ANU Heritage Office 2011)

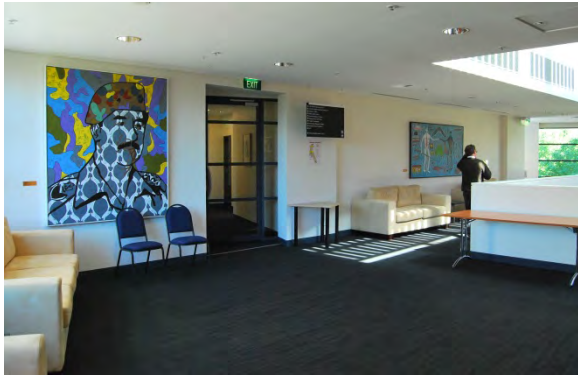


**Figure 7:** Sir Roland Wilson' Desk, chair and personal objects. (Source: ANU Heritage Office 2011)



**Figure 8:** David Jenz sculpture, *Raised Pinnacle*, 2001, within landscaped garden outside the front entrance to the Sir Roland Wilson Building. (Source: ANU Heritage Office 2011)

### Photographs



**Figure 9:** Artworks in situ, top floor of the Sir Roland Wilson Building. (Source: ANU Heritage Office 2011)



**Figure 10:** Evidence of rabbit habitation on the site. (Source: ANU Heritage Office 2011)



**Figure 11:** Natural regrowth of native species at the rear of the building. (Source: ANU Heritage Office 2011)



**Figure 12:** View from the western end of the building. (Source: ANU Heritage Office 2011)

## Management Issues

### Constraints and Opportunities

---

As The Sir Roland Wilson Building is of neutral significance, no **constraints** are noted.

The Sir Roland Wilson Building is ranked as being of 'Neutral' significance as it does not embody, reflect or demonstrate Commonwealth or National Heritage values. The building makes no contribution to the site nor does it detract from the overall heritage values of the ANU Acton campus.

The **Tolerance for Change** heritage management tool, outlined in Section 7.6 of the ANU Acton Campus Heritage Study 2012, will assist in conserving heritage values through a process of change. The Sir Roland Wilson is able to tolerate a substantial amount of change through development. Removal of neutral elements is not necessary unless it allows for heritage values of the campus to be regained, reinforced or conserved.

As The Sir Roland Wilson Building is of neutral significance, no **opportunities** are noted.

---

### Recommendations

---

Photographic recording for the ANU archives should be undertaken prior to substantial change to buildings or landscaping in any future development.

---