

Australian National University

Acton Campus — Site Inventory



Study Item/ Area	Innovations Building
Acton Campus Precinct	GARRAN Precinct
Building Nos. & Names	124 (Innovations Building)

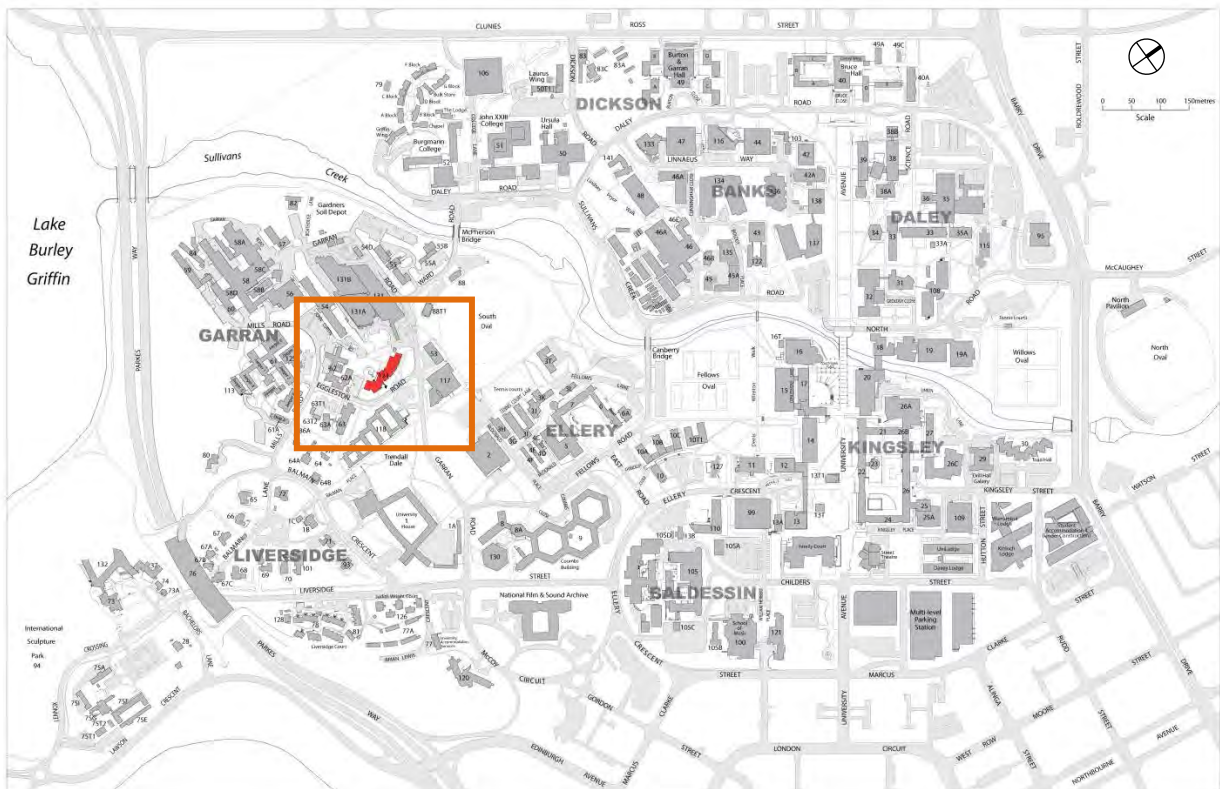


Figure 1: Location of study area within the ANU Acton Campus site.

Heritage Ranking	Innovations Building—Neutral—Does not meet the criteria for Commonwealth Heritage List.
Heritage Listing	The Innovations building is not individually listed on the Commonwealth Heritage List (CHL).
Condition—Date	The condition noted here is at November 2011. The extant buildings and trees of the Innovations Building area continue to be well maintained for office accommodation are in good condition.
Relevant Documentation	There is no relevant documentation prepared for the Innovations Building.

Context of the Buildings

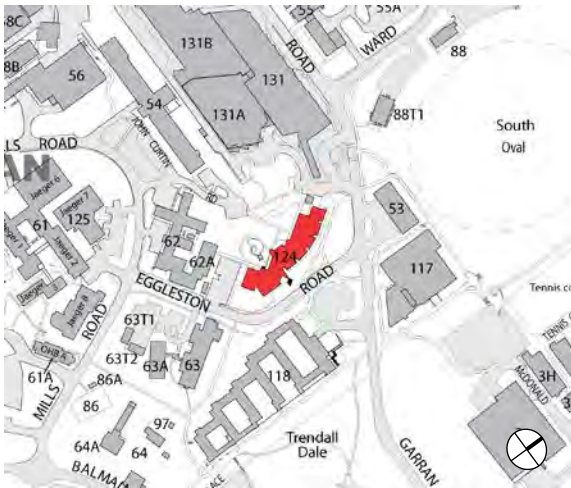


Figure 2: The Innovations building in relation to the Garran area of the ANU Campus

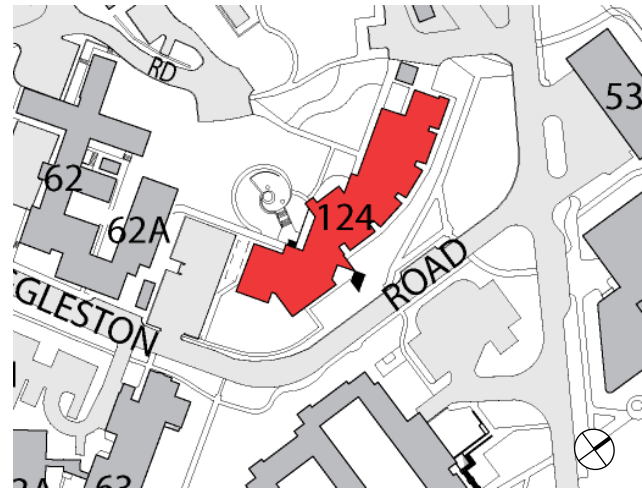


Figure 3: Configuration of the Innovations building off Eggleston Road.

Brief Historical Overview

In 1997 a new building was deemed necessary to stem the accommodation shortages being experienced by research schools such as the John Curtin School of Medical Research (JCSMR) and Research School of Earth Sciences (RSES). Other schools supporting the implementation of new accommodation, laboratory and office space included the Research School of Physical Sciences and Engineering (RSPHSE) and the National Centre for Epidemiology and Population Health (NCEPH).

Construction of the Innovations building was completed in two separate stages, with both HBO+EMTB and Anthony Cooper and Associates architectural firms sharing the design process. The building was opened in November 1999.

The building was leased out for research purposes for many years until it was re-fitted for office use in 2010. The Facilities and Services Division has occupied the upper floors of the Innovations Building since April 2011. Currently the Division is refurbishing the ground floor for use in early 2012. The Innovations Building currently houses the ANU College of Medicine and Health Services, the Australian Research Council, Seeing Machines, Biotron, RPO, Vimed Biosciences, Synova (SMS) and the ANU Office of Commercialisation.

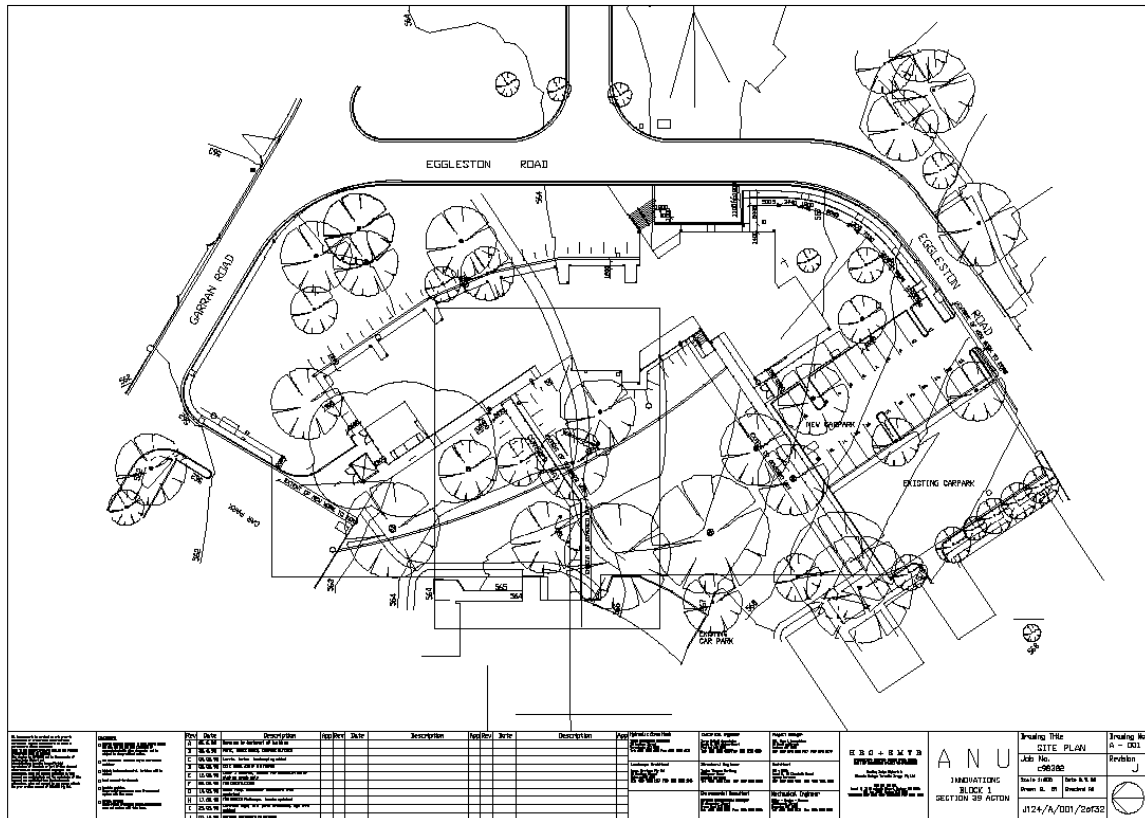


Figure 4: The 1998 site plan for the Innovations Building including landscaping and tree positioning laid over the existing structures.

Description of the Innovations Building

Buildings

The Innovations Building is of slab based steel frame construction with cement panelled walls and top hinged, aluminium framed windows. The exterior is finished in a neutral, grey rendered, in-situ concrete panels and corrugated iron. Internal layout was initially designed for office and laboratory space however has been refitted to accommodate offices for the Facilities and Services Division. This includes painted plasterboard walls and the installation of carpet. Features of the building include card entry security systems and a prismatic skylight above the entry doors in the foyer.

Landscape

The landscape in the area is mostly bedded plantings with some remnant trees on the corner of Eggleston and Garran Roads. The beds include hedging plantings and low growing shrubs. There is a landscaped courtyard area with both native and exotic plantings and outdoor seating.

Significance Assessment against the Commonwealth Heritage criteria

Statement of Significance

N/A

Criteria	Assessment
<p>(a) Historic The place has significant heritage value because of the place's importance in the course, or pattern, of Australia's natural or cultural history.</p>	The Innovations Building does not meet CHL criterion (a) for historic values.
<p>(b) Rarity The place has significant heritage values because of the place's possession of uncommon, rare or endangered aspects of Australia's natural or cultural history.</p>	The Innovations Building does not meet CHL criterion (b) for rarity values.
<p>(c) Scientific The place has significant heritage value because of the place's potential to yield information that will contribute to an understanding of Australia's natural or cultural history.</p>	The Innovations Building does not meet CHL criterion (c) for scientific values.
<p>(d) Representative The place has significant heritage value because of the place's importance in demonstrating the principal characteristics of: A class of Australia's natural or cultural places; or A class of Australia's natural or cultural environments.</p>	The Innovations Building does not meet CHL criterion (d) for representative values.

Significance Assessment against the Commonwealth Heritage criteria

<p>(e) Aesthetic The place has significant heritage value because of the place's importance in exhibiting particular aesthetic characteristics valued by a community or cultural group.</p>	<p>The Innovations Building does not meet CHL criterion (e) for aesthetic values.</p>
<p>(f) Creative/Technical The place has significant heritage value because of the place's importance in demonstrating a high degree of creative or technical achievement at a particular period.</p>	<p>The Innovations Building does not meet CHL criterion (f) for creative/technical values.</p>
<p>(g) Social The place has significant heritage value because of the place's strong or special association with a particular community or cultural group for social, cultural or spiritual reasons.</p>	<p>The Innovations Building does not meet CHL criterion (g) for social values.</p>
<p>(h) Associative The place has significant heritage value because of the place's special association with the life or works of a person, or group of persons, of importance in Australia's natural and cultural history.</p>	<p>The Innovations Building does not meet CHL criterion (h) for associative values.</p>
<p>(i) Indigenous The place has significant heritage value because of the place's importance as part of Indigenous tradition.</p>	<p>The Innovations Building does not meet CHL criterion (i) for Indigenous values.</p>

Photographs



Figure 5: 1975 site of the Innovations Building. (Source: ANU Archives)



Figure 6: Interior of the Innovations Building at the completion of initial construction in 1998. (Source: <http://www.hboemtb.com>)



Figure 7: Eastern entrance to the Innovations Building. (Source: ANU Heritage Office 2011)



Figure 8: The Innovations building entrance foyer including prismatic artwork. (Source: ANU Heritage Office 2011)



Figure 9: The landscaped courtyard area to the rear of Innovations Building. (Source: ANU Heritage Office 2011)



Figure 10: The front entrance to the Innovations Building on Eggleston Road. (Source: ANU Heritage Office 2011)

Management Issues

Constraints and Opportunities

As The Innovations Building is of neutral significance, no **constraints** are noted.

The Innovations Building is ranked as being of 'Neutral' significance as it does not embody, reflect or demonstrate Commonwealth or National Heritage values. The building makes no contribution to the site nor does it detract from the overall heritage values of the ANU Acton campus.

The **Tolerance for Change** heritage management tool, outlined in Section 7.6 of the ANU Acton Campus Heritage Study 2012, will assist in conserving heritage values through a process of change. The Innovations Building is able to tolerate a substantial amount of change through development. Removal of neutral elements is not necessary unless it allows for heritage values of the campus to be regained, reinforced or conserved.

As The Innovations Building is of neutral significance, no **opportunities** are noted.

Recommendations

Photographic recording for the ANU archives should be undertaken prior to substantial change to buildings or landscaping in any future development.
