

Australian National University

Acton Campus — Site Inventory



Study Item/ Area	Concessions Building / Union Court / Union Building
Acton Campus Precinct	KINGSLEY Precinct
Building Nos. & Names	17 (Concessions Building), 20 (Union Building), Union Court

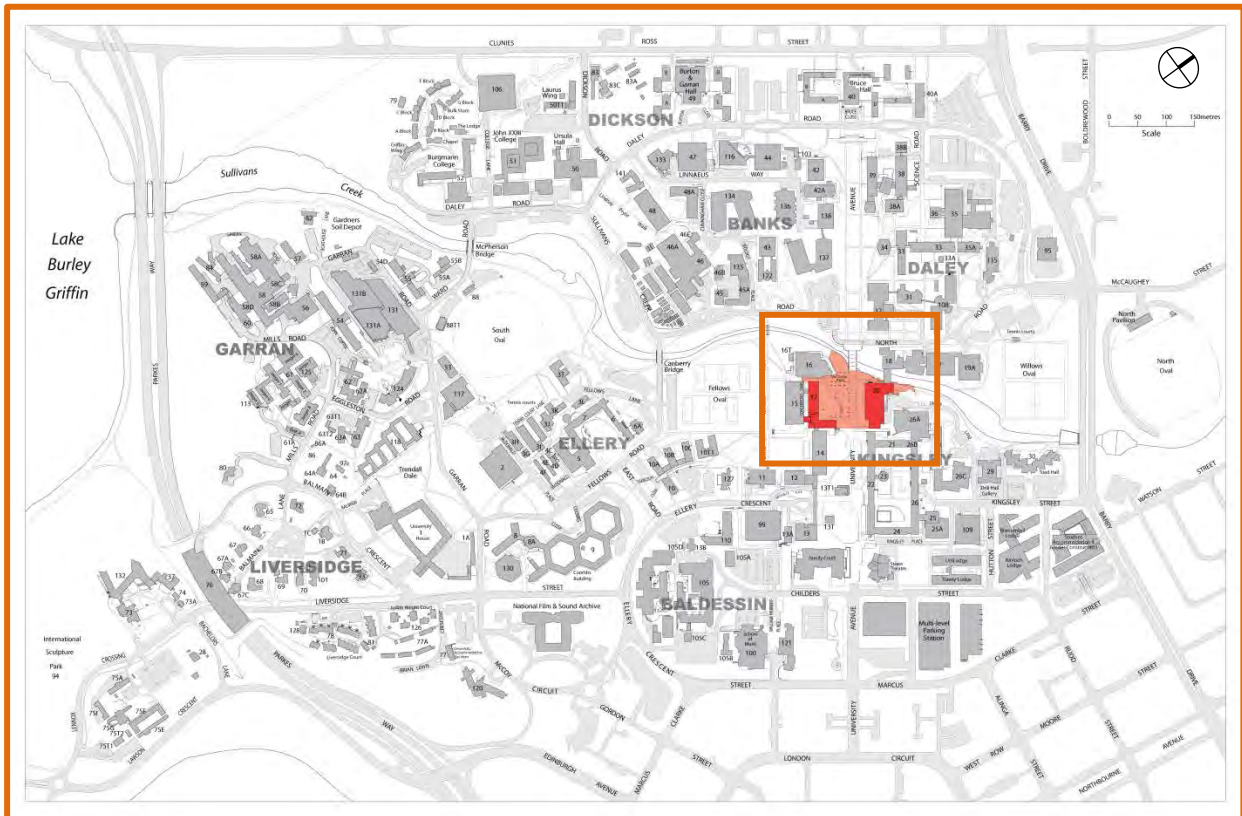


Figure 1: Location of study area within the ANU Acton Campus site.

Heritage Ranking	Concessions Building— Moderate —Meets the criteria for Commonwealth Heritage List Union Court— Moderate —Meets the criteria for Commonwealth Heritage List Union Building— Moderate —Meets the criteria for Commonwealth Heritage List
Heritage Listing	The Concessions Building, Union Court & Union Buildings are not individually listed on the Commonwealth Heritage List (CHL).
Condition—Date	The condition noted here is at February 2012. The extant buildings (and trees) of The Concessions Building, Union Court and the Union Building continue to be well maintained for office and retail accommodation are in reasonable condition.
Relevant Documentation	There is currently no relevant documentation for this set of buildings.

Context of the Buildings

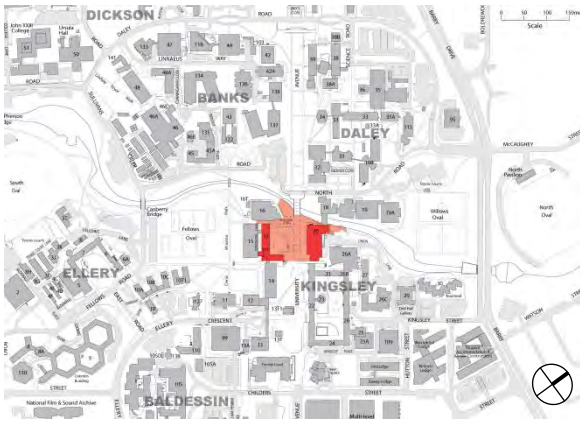


Figure 2: The Concessions Building, Union Court & Union Building in relation to the Daley, Kingsley and Banks Precincts.

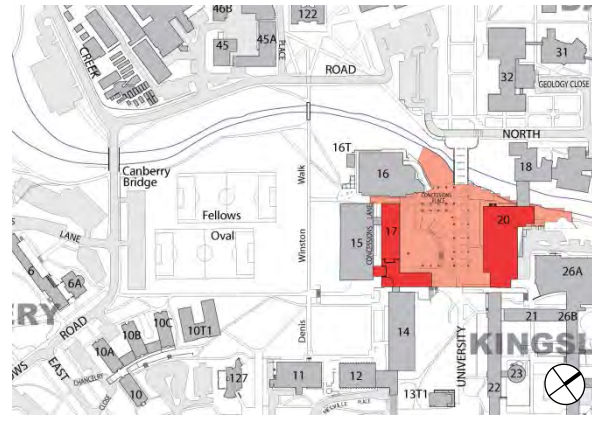


Figure 3: The Concessions Building, Union Court & Union Building in relation to Sullivans Creek and Fellows Oval.

Brief Historical Overview

Concessions and Student Services Building

In 1971, planning began for a new Concessions Building; to house a banking centre, credit union, bookshop, Post Office and pharmacy, and by December 1972 the building was complete, with the ground floor dedicated to Concessions and the first floor to student services. The Concessions Building underwent major refurbishment in 1999, and in 2011 solar panels were installed on the roof, which were officially launched on September 7 2011 by Senator the Honourable Don Farrell, Parliamentary Secretary for Sustainability and Urban Water. This project was known as the "ANU Concessions Building Photovoltaic Array".

This building currently houses the ANU Student Association (ANUSA), Union Café, Chaplaincy, Commonwealth Bank, Service One Credit Union, Sizzle Bento Sushi Bar, University Information and the Co-op Bookshop.

University Union Building

The original Student Union was housed in the Pauline Griffin Building; however when the fledgling University quickly outgrew the space, plans were drafted for a new Union. The Union Building was completed in March 1973, and opened by Kim Beazley, Minister for Education. The building was designed by Yuncken Freeman Architects and built by Leighton. The ANU Uni Bar within the Union Building has hosted many renowned local and international music acts. In February 2004, a canopy was erected over the outdoor area to the south of the Uni Bar entrance to provide shelter from the elements.

Union Court

In 1974 University Avenue was converted into a pedestrian plaza for a greater ease of pedestrian access to the surrounding buildings. By 2001, the area was once again reconstructed to a design by Cox Architects and carried out by Manteena Constructions to redevelop the Union Court square. In 1999 artist Deborah Halpern was commissioned by the University to design artworks for the Union Court area, and in 2001 her glazed tile artworks, entitled Spirit of Enquiry were installed around the court. In 2003 a ramp was installed for cyclists in the northeast corner of Union Court between the upper and lower levels of University Avenue in order to reduce pedestrian/cyclist conflict.

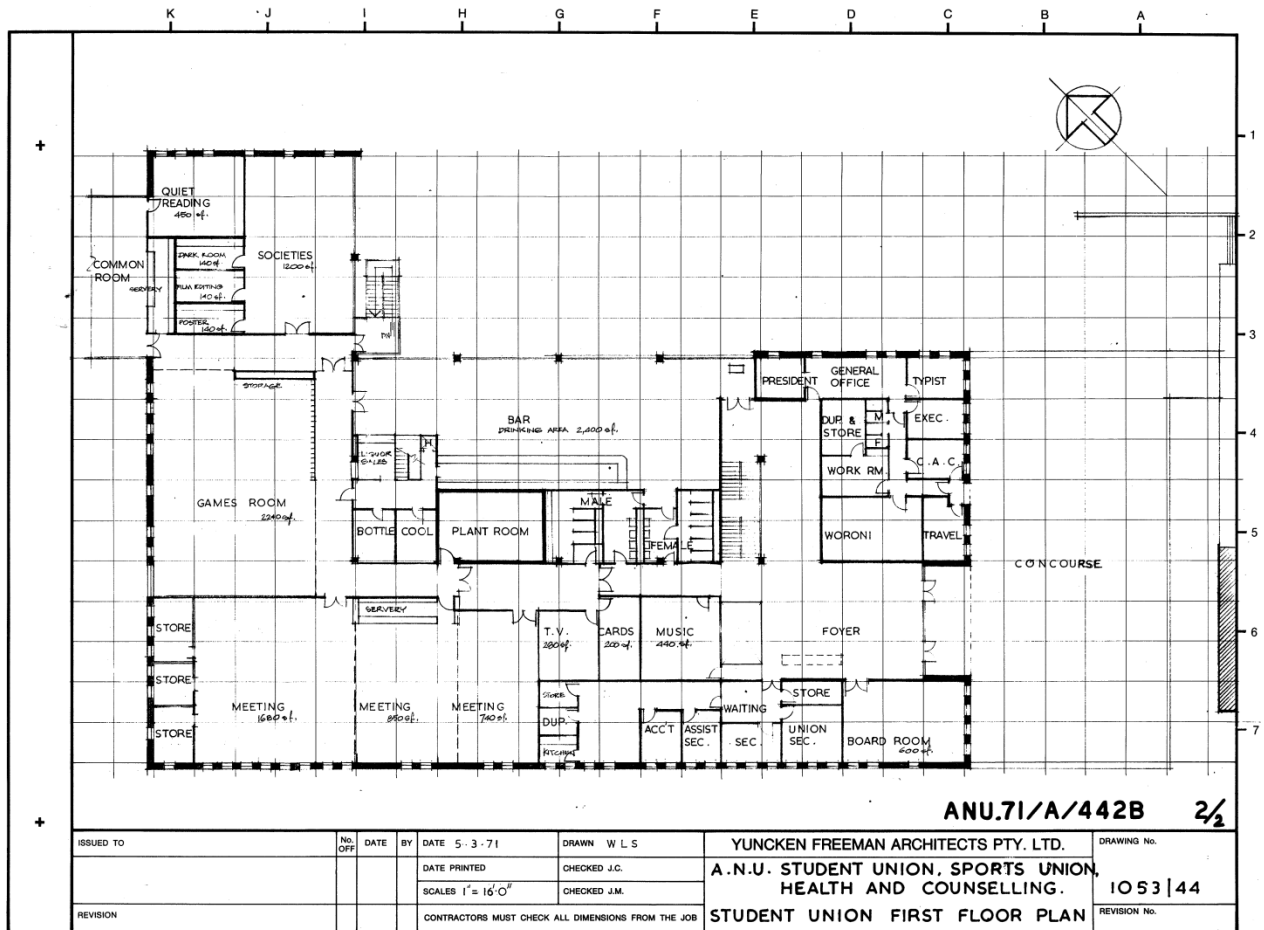


Figure 4: The original plan of the original administrative layout of the ground floor of the ANU Student Union Building. By Yuncken Freeman Architects 1971.

Description of the Union Building & Concessions Building

Buildings

Concessions Building

The Concessions Building is a flat roofed concrete building with a promenade, sited to address the courtyard off University Avenue. Vines soften the impact of the harsh materials used in its construction. The Concessions Building is sited to give an ‘in-ground’ effect, with a pair of receiving dishes dominating the roof line. The exterior is constructed of concrete panel, concrete pavers and off form concrete structures. The roof of this building provides the JB Chifley Building entrance with a covered walkway. The interior consists of concrete panels, off form concrete frame blocks and painted timber shop fronts.

Union Building

The Union Building is a two storey brick and concrete building. The exterior of the building is face brick on the second story, with the ground floor highly fenestrated with full height aluminium framed windows and sliding doors. The building has a flat roof, hidden behind a concrete parapet.

Landscape, Including Union Court

The landscape in this area is largely concrete pedestrian areas,

Union Court is a large open courtyard, including part of university avenue and the redeveloped area in front of the Concessions

Building (19). The area primarily consists of concrete pathways and brick paving. There are several trees to provide shade for users and sections of bedded shrubs and grassed areas. This area has seen much redevelopment since its initial construction including the alteration of ground levels and the removal of several trees.

Summary Significance Assessment against the Commonwealth Heritage criteria

Criteria	Brief Assessment
<p>(a) Historic The place has significant heritage value because of the place's importance in the course, or pattern, of Australia's natural or cultural history.</p>	<p>The Union Building, Concessions Building and Union Court are significant in demonstrating the growth of the University in the 1960s and 1970s, and the enhanced requirements for student services and amenities.</p> <p>The ANU Bar within the Union Building is historically significant as the venue of many significant music performances during including the likes of the Beastie Boys, Cypress Hill, Black Eyed Peas, Korn, Public Enemy, and grunge legends Nirvana.</p> <p>The Union Building, Concessions Building and Union Court meets CHL criterion (a) for historic values.</p> <p><i>Attributes</i> The buildings, their use for student amenities, the ANU Bar as a venue for significant musical performances.</p>
<p>(b) Rarity The place has significant heritage values because of the place's possession of uncommon, rare or endangered aspects of Australia's natural or cultural history.</p>	<p>The Union Building, Concessions Building and Union Court do not meet CHL criterion (b) for rarity values.</p>
<p>(c) Scientific The place has significant heritage value because of the place's potential to yield information that will contribute to an understanding of Australia's natural or cultural history.</p>	<p>The Union Building, Concessions Building and Union Court do not meet CHL criterion (c) for scientific values.</p>

Summary Significance Assessment against the Commonwealth Heritage criteria

<p>(d) Representative The place has significant heritage value because of the place's importance in demonstrating the principal characteristics of: A class of Australia's natural or cultural places; or A class of Australia's natural or cultural environments.</p>	<p>The Union Building, Concessions Building and Union Court do not meet CHL criterion (d) for representative values.</p>
<p>(e) Aesthetic The place has significant heritage value because of the place's importance in exhibiting particular aesthetic characteristics valued by a community or cultural group.</p>	<p>The Union Building, Concessions Building and Union Court do not meet CHL criterion (e) for aesthetic values.</p>
<p>(f) Creative/Technical The place has significant heritage value because of the place's importance in demonstrating a high degree of creative or technical achievement at a particular period.</p>	<p>The Union Building, Concessions Building and Union Court do not meet CHL criterion (f) for creative/technical values.</p>
<p>(g) Social The place has significant heritage value because of the place's strong or special association with a particular community or cultural group for social, cultural or spiritual reasons.</p>	<p>While it is highly likely that the The Union Building, Concessions Building and Union Court would hold social value for staff and students of the ANU, this has not been formally tested. The Arts Centre and Transportable do not meet CHL criterion (g) for social values.</p>

Summary Significance Assessment against the Commonwealth Heritage criteria

<p>(h) Associative The place has significant heritage value because of the place's special association with the life or works of a person, or group of persons, of importance in Australia's natural and cultural history.</p>	<p>The Union Building, Concessions Building and Union Court do not meet CHL criterion (h) for associate values.</p>
<p>(i) Indigenous The place has significant heritage value because of the place's importance as part of Indigenous tradition.</p>	<p>The Union Building, Concessions Building and Union Court do not meet CHL criterion (i) for Indigenous values.</p>

Photographs



Figure 5: View of Union Court September 1973 (Source: ANU Archives)



Figure 8: View of Union Court Site 7th May 1965 (Source: ANU Archives)

Photographs



Figure 7: Union Court before major refurbishment September 1973 (Source: ANU Archives)



Figure 6: View of Union Court and the Unicycle Bicycle Centre. (Source: ANU Heritage Office 2012)



Figure 9: Artwork by Deborah Halpern, 2001. Commissioned By the ANU. (Source: ANU Heritage Office 2012)



Figure 10: Front entrance of the ANU University Union Building. (Source: ANU Heritage Office 2012)

Management Issues

Constraints and Opportunities

Constraints arise from the identified heritage values of the Concessions Building, Union Court & Union Building and it is a requirement under the *Environment Protection and Biodiversity Conservation Act 1999 (Cwth)* (EPBC Act) to conserve them. The significant values of the Concessions Building, Union Court & Union Building, as indicated in the attributes above, should be conserved wherever possible.

The Concessions Building, Union Court & Union Building are of Moderate heritage value and meet the EPBC Commonwealth Heritage criteria a) for historic values. Elements are of moderate heritage value and make a contribution to the overall heritage significance of ANU Acton campus and should be retained and conserved. They require care in their management and can generally tolerate a low degree of change or some change and adaptive reuse. Loss or unsympathetic alteration could diminish the Commonwealth Heritage or local heritage values of the ANU Acton campus.

The **Tolerance for Change** heritage management tool, outlined in Section 7.6 of the ANU Acton Campus Heritage Study 2012, will assist in conserving heritage values through a process of change. The Concessions Building, Union Court & Union Building is able to tolerate a moderate level of change through development whereby the historic, creative/technical and associative attributes and characteristics are conserved and interpreted.

Opportunities arise from the identified heritage values of the Concessions Building, Union Court and the Union Building. The history of the Concessions Building, Union Court and the Union Building should be interpreted to maintain the historic and associative values of significant attributes identified in the assessments above. A greater degree of change may be tolerated if interpretation is of a very high quality and considered in any future development, which presents the identified heritage values for the future.

Recommendations

If development resulting in loss of significant fabric is proposed, interpretation and a heritage impact assessment would be a prerequisite according to EPBC Act requirements.

Photographic recording for the ANU archives should be undertaken prior to any potential loss of significant fabric, buildings or landscaping in any future development.

A formal assessment of the aesthetic and social values of the building should be carried out.
