

# Australian National University

## Acton Campus — Site Inventory



Study Item/ Area	Section 86, Native Animal Enclosure
Acton Campus Precinct	DICKSON Precinct
Building Nos. & Names	79 (Native Animal Enclosure)

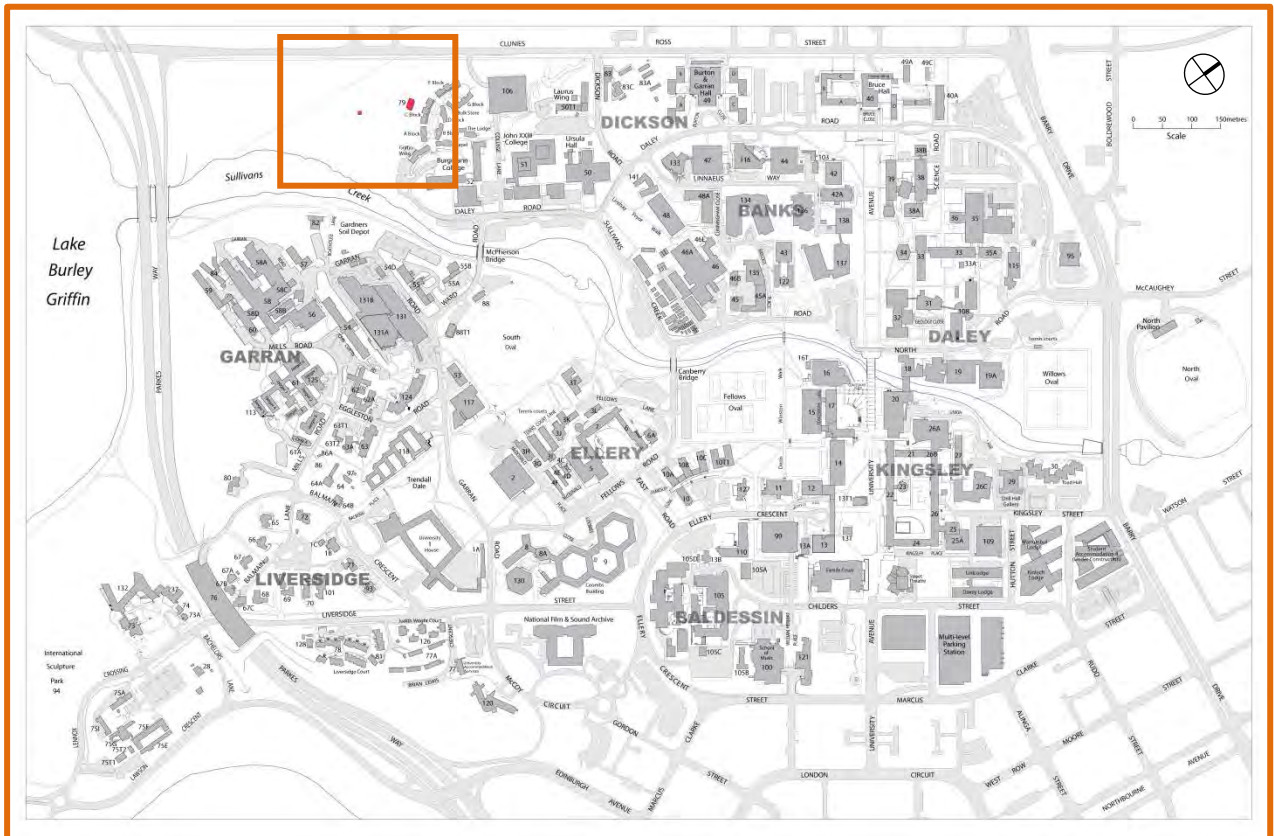


Figure 1: Location of study area within the ANU Acton Campus site.

Heritage Ranking	Native Animal Enclosure—Neutral—Does not meet the criteria for Commonwealth Heritage List
Heritage Listing	The Native Animal Enclosure is not individually listed on the Commonwealth Heritage List (CHL).
Condition—Date	The condition noted here is at June 2012. The site of the Native Animal Enclosure continues to be well maintained and is in reasonable condition.
Relevant Documentation	There is currently no relevant documentation for the Native Animal Enclosure.

### Context of the Buildings

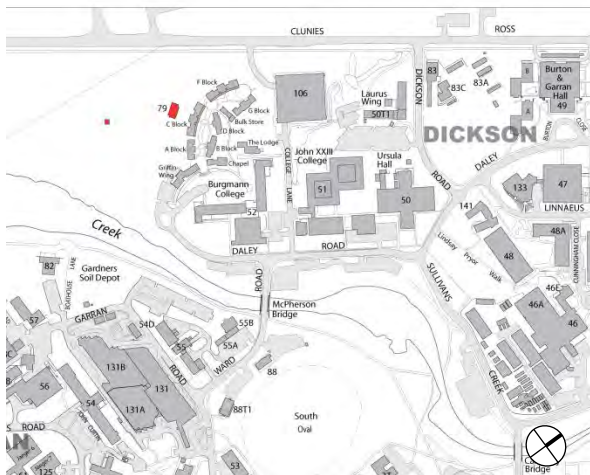


Figure 2: The Native Animal Enclosure in the context of the Dickson Precinct to the west of Sullivan's Creek.

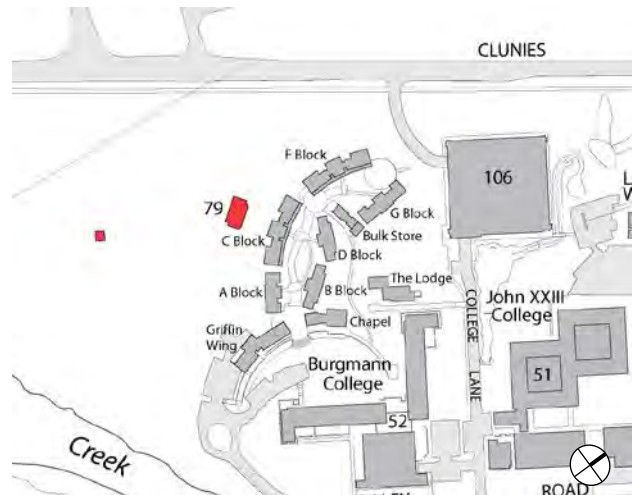


Figure 3: The Native Animal Enclosure in relation to Burgmann College and the Dickson Precinct Car park to the north.

### Brief Historical Overview

Plans were prepared for the Native Animal Enclosure in 1987 and the site was constructed in 1989. It has functioned as an enclosure for animals since that time. There is some presumed association with the department of Botany and Zoology for their research however dates are not available. There have been recent plans for alterations to the site however they have not been finalised at time of publication.

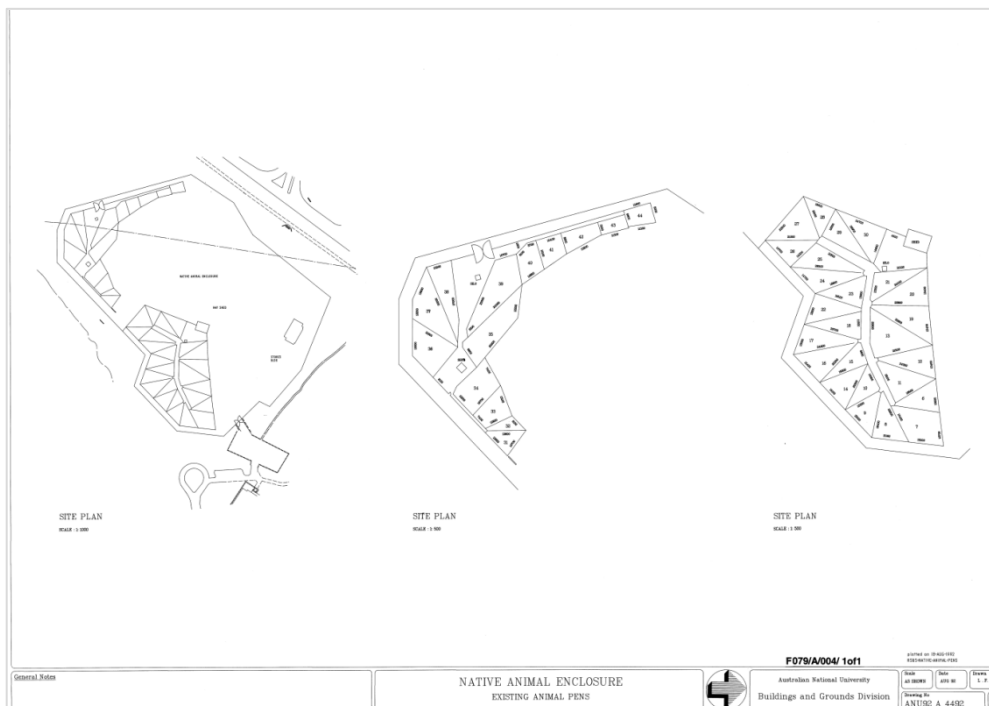


Figure 4: The site plan for the Native Animal Enclosure including the existing pens at August 1992. Drawn by the Buildings and Grounds Division of the ANU.

## Description of the Native Animal Enclosure.

### Buildings

The site contains one laboratory building and a double garage used for storage. There are also external pens for housing native animals in various conditions.

### Landscape

The landscape is mainly native plantings with some maintenance to ensure safety for enclosed animals and site visitors.

## Significance Assessment against the Commonwealth Heritage criteria

### Statement of Significance

N/A

Criteria	Assessment
<b>(a) Historic</b> The place has significant heritage value because of the place's importance in the course, or pattern, of Australia's natural or cultural history.	The Native Animal Enclosure does not meet CHL criterion (a) for historic values.
<b>(b) Rarity</b> The place has significant heritage values because of the place's possession of uncommon, rare or endangered aspects of Australia's natural or cultural history.	The Native Animal Enclosure does not meet CHL criterion (b) for rarity values.
<b>(c) Scientific</b> The place has significant heritage value because of the place's potential to yield information that will contribute to an understanding of Australia's natural or cultural history.	The Native Animal Enclosure does not meet CHL criterion (c) for scientific values.

Significance Assessment against the Commonwealth Heritage criteria

<p><b>(d) Representative</b> The place has significant heritage value because of the place's importance in demonstrating the principal characteristics of: A class of Australia's natural or cultural places; or A class of Australia's natural or cultural environments.</p>	<p>The Native Animal Enclosure does not meet CHL criterion (d) for representative values.</p>
<p><b>(e) Aesthetic</b> The place has significant heritage value because of the place's importance in exhibiting particular aesthetic characteristics valued by a community or cultural group.</p>	<p>The Native Animal Enclosure does not meet CHL criterion (e) for aesthetic values.</p>
<p><b>(f) Creative/Technical</b> The place has significant heritage value because of the place's importance in demonstrating a high degree of creative or technical achievement at a particular period.</p>	<p>The Native Animal Enclosure does not meet CHL criterion (f) for creative/technical values.</p>
<p><b>(g) Social</b> The place has significant heritage value because of the place's strong or special association with a particular community or cultural group for social, cultural or spiritual reasons.</p>	<p>The Native Animal Enclosure does not meet CHL criterion (g) for social values.</p>

## Significance Assessment against the Commonwealth Heritage criteria

<p><b>(h) Associative</b> The place has significant heritage value because of the place's special association with the life or works of a person, or group of persons, of importance in Australia's natural and cultural history.</p>	<p>The Native Animal Enclosure does not meet CHL criterion (h) for associate values.</p>
<p><b>(i) Indigenous</b> The place has significant heritage value because of the place's importance as part of Indigenous tradition.</p>	<p>The Native Animal Enclosure does not meet CHL criterion (i) for Indigenous values.</p>

## Photographs



**Figure 5:** The reptile section of the Native Animal Enclosure. (Source: <http://www.anu.edu.au/BoZo/Scott/Photos.html>)



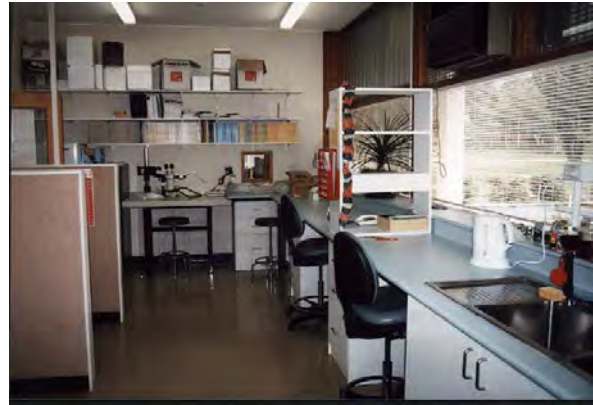
**Figure 6:** Large housing pens for reptiles within the Native Animal Enclosure. (Source: <http://www.anu.edu.au/BoZo/Scott/Photos.html>)



## Significance Assessment against the Commonwealth Heritage criteria



**Figure 7:** Laboratory and office space for the departments working with the Native Animal Enclosure. (Source: <http://www.anu.edu.au/BoZo/Scott/Photos.html>)



**Figure 8:** Administrative Offices for the departments working with the Native Animal Enclosure. (Source: <http://www.anu.edu.au/BoZo/Scott/Photos.html>)

## Management Issues

### Constraints and Opportunities

As the Native Animal Enclosure is of neutral significance, no **constraints** are noted.

The building is ranked as being of 'Neutral' significance as it does not embody, reflect or demonstrate Commonwealth or National Heritage values. The building makes no contribution to the site nor does it detract from the overall heritage values of the ANU Acton campus.

The **Tolerance for Change** heritage management tool, outlined in Section 7.6 of the ANU Acton Campus Heritage Study 2012, will assist in conserving heritage values through a process of change. The Native Animal Enclosure is able to tolerate a substantial amount of change through development. Removal of neutral elements is not necessary unless it allows for heritage values of the campus to be regained, reinforced or conserved.

As The Native Animal Enclosure is of neutral significance, no **opportunities** are noted.

### Recommendations

Photographic recording for the ANU archives should be undertaken prior to substantial change to buildings or landscaping in any future development.