

Study Item/ Area	Boathouse and Gardens & Grounds Soil Yard
Acton Campus Precinct	GARRAN Precinct
Building Nos. & Names	82 (Boathouse)

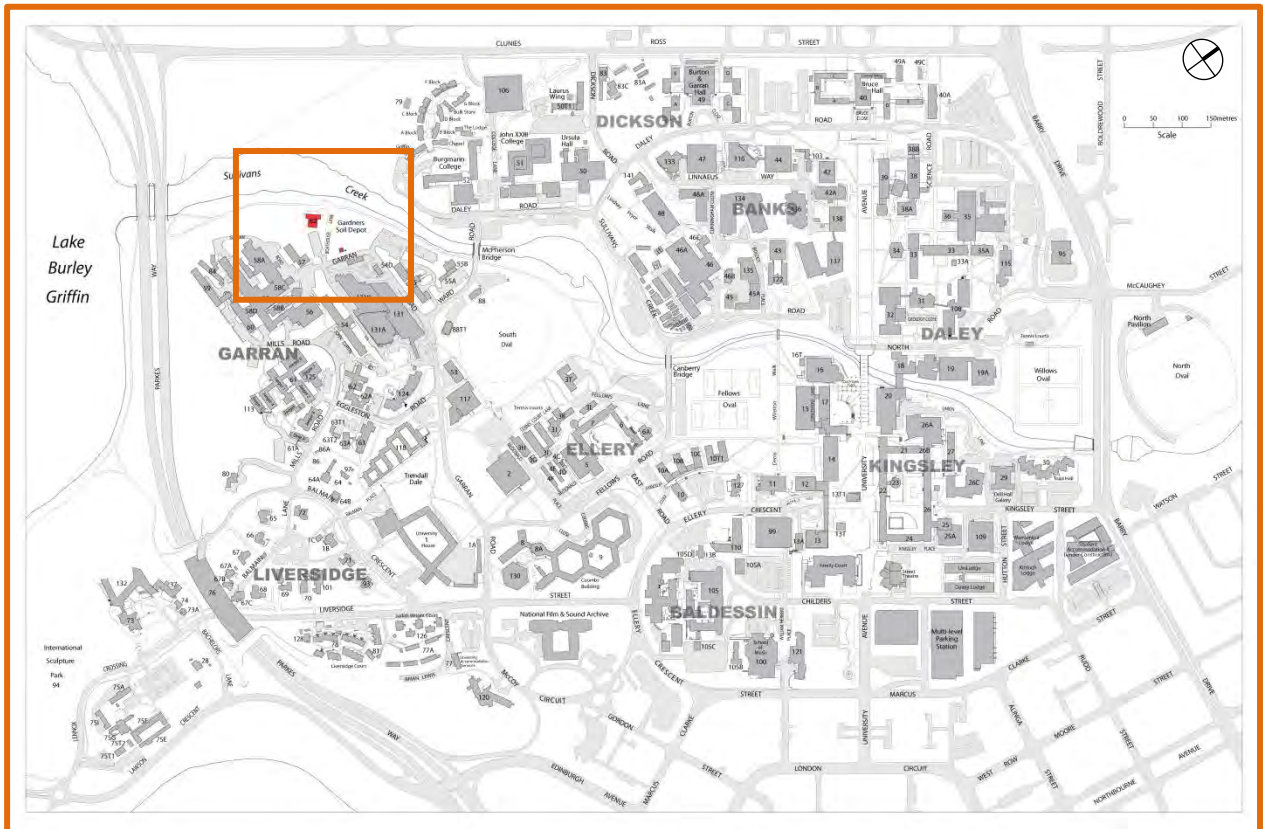


Figure 1: Location of study area within the ANU Acton Campus site.

Heritage Ranking	Boathouse— Low —Does not meet criteria for Commonwealth Heritage List Soil Yard— Neutral —Does not meet criteria for Commonwealth Heritage List
Heritage Listing	The Boathouse and Gardens & Grounds soil yard are not individually listed on the Commonwealth Heritage List (CHL).
Condition—Date	The condition noted here is at February 2012. The buildings and grounds are well maintained and are in good condition for their purpose.
Relevant Documentation	There is no relevant documentation for this area.

Context of the Buildings

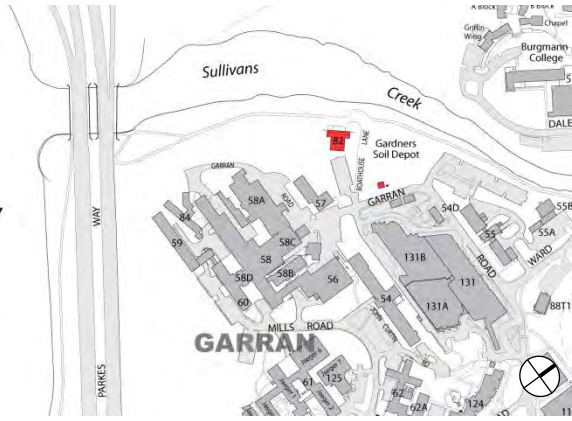


Figure 2: The Boathouse and Gardens & Grounds soil yard in the context of the Garran Precinct, to the east of Sullivan's Creek.



Figure 3: The Boathouse and Gardens & Grounds soil yard in relation to Garran Road and Sullivan's Creek.

Brief Historical Overview

The Boathouse was constructed in 1971 by McPhail Builders for the Sports Union and was designed by the Property and Plans Department. This replaced a temporary corrugated iron shed used to house the racing shells of the ANU Boat Club boats for many years.

It was opened by Mr Moshe Erell, Israeli Ambassador to Australia. The Ambassador was also made an honorary member of the ANU Boat Club. The design included room for thirty boat racks, a maintenance workshop, showers and toilets, and space was made available for future expansions.

In 2008 work was commissioned by the ANU to install a roof safety system as per the specifications of Facilities and Services Division.

In 2009 damage was done to the rear of the boat house by a falling tree. Total cost of roof replacement and damage repair came to \$57,352.35 with the contractors Tigon, Roof Safe, Action and Affinity engaged to complete the works.

In 1999 it was proposed and approved that the Gardener's soil yard be relocated from its position to behind Burgmann College. Following this it was moved to the current site on Garran Road.

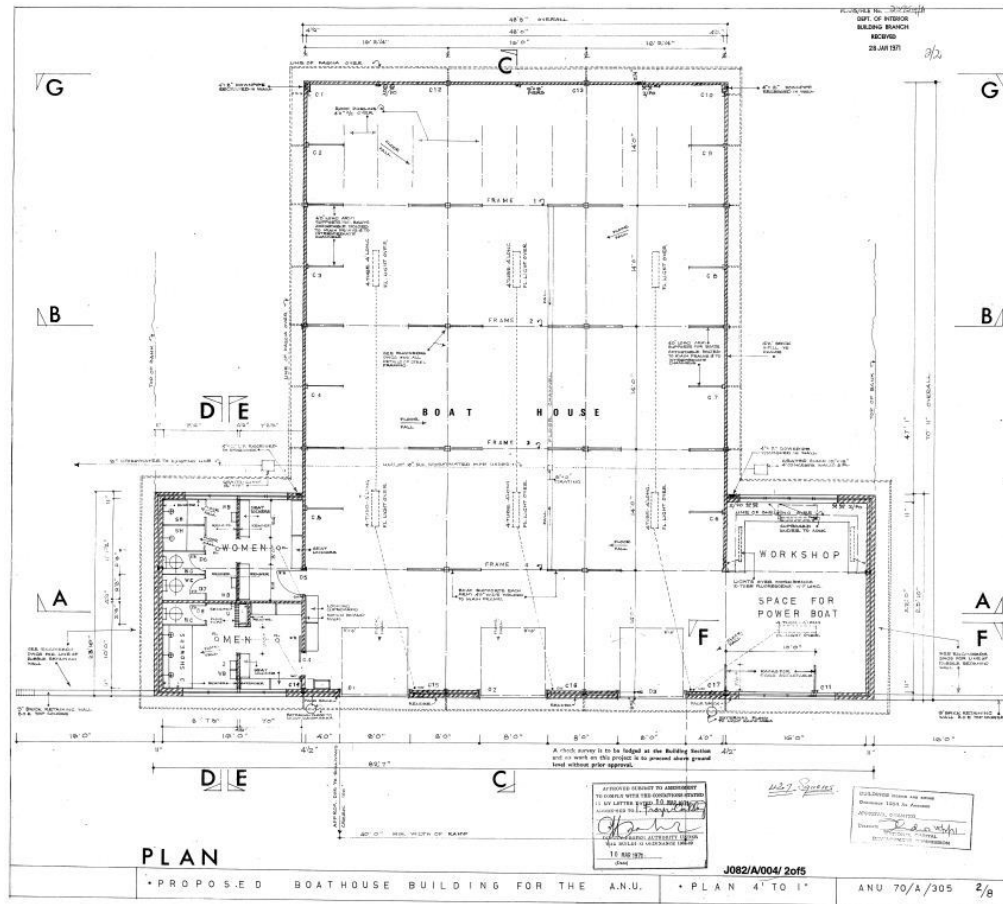


Figure 4: The proposed plans for the Boathouse building for the ANU Boat Club, 1971. (Source: ANU Drawings Office)

Description of the Boathouse and Soil Yard

Buildings

The boathouse is of brick construction with concrete flooring. It includes three roller doors for boat access and aluminium framed sliding windows. The roof is steel framed with metal sheeting and metal external plumbing.

A metal link fence surrounds ordered sites of soil generation materials with a non-landscaped area outside of native shrubs and mature eucalypts. There is a colour bond shed with three roller doors at the eastern end of the site.

Landscape

The landscape includes bedded gardens with native plantings and mature eucalypts. An asphalt covered road runs along the Sullivans Creek side of the site with boat ramp access to the Creek.

Significance Assessment against the Commonwealth Heritage criteria

Statement of Significance

N/A

Criteria	Assessment
<p>(a) Historic The place has significant heritage value because of the place's importance in the course, or pattern, of Australia's natural or cultural history.</p>	<p>The Boathouse and Gardens & Grounds Soil Yard do not meet CHL criterion (a) for historic values.</p>
<p>(b) Rarity The place has significant heritage values because of the place's possession of uncommon, rare or endangered aspects of Australia's natural or cultural history.</p>	<p>The Boathouse and Gardens & Grounds Soil Yard do not meet CHL criterion (b) for rarity values.</p>
<p>(c) Scientific The place has significant heritage value because of the place's potential to yield information that will contribute to an understanding of Australia's natural or cultural history.</p>	<p>The Boathouse and Gardens & Grounds Soil Yard do not meet CHL criterion (c) for scientific values.</p>
<p>(d) Representative The place has significant heritage value because of the place's importance in demonstrating the principal characteristics of: A class of Australia's natural or cultural places; or A class of Australia's natural or cultural environments.</p>	<p>The Boathouse and Gardens & Grounds Soil Yard do not meet CHL criterion (d) for representative values.</p>

Significance Assessment against the Commonwealth Heritage criteria

<p>(e) Aesthetic The place has significant heritage value because of the place's importance in exhibiting particular aesthetic characteristics valued by a community or cultural group.</p>	<p>The Boathouse and Gardens & Grounds Soil Yard do not meet CHL criterion (e) for aesthetic values.</p>
<p>(f) Creative/Technical The place has significant heritage value because of the place's importance in demonstrating a high degree of creative or technical achievement at a particular period.</p>	<p>The Boathouse and Gardens & Grounds Soil Yard do not meet CHL criterion (f) for creative/technical values.</p>
<p>(g) Social The place has significant heritage value because of the place's strong or special association with a particular community or cultural group for social, cultural or spiritual reasons.</p>	<p>The Boathouse and Gardens & Grounds Soil Yard do not meet CHL criterion (g) for social values.</p>
<p>(h) Associative The place has significant heritage value because of the place's special association with the life or works of a person, or group of persons, of importance in Australia's natural and cultural history.</p>	<p>The Boathouse and Gardens & Grounds Soil Yard do not meet CHL criterion (h) for associate values.</p>

Significance Assessment against the Commonwealth Heritage criteria

(i) Indigenous

The place has significant heritage value because of the place's importance as part of Indigenous tradition.

The Boathouse and Gardens & Grounds Soil Yard do not meet CHL criterion (i) for Indigenous values.

Photographs



Figure 5: Western façade of the ANU Boathouse with roller doors and bicycle racks. (Source: ANU Heritage Office 2012)



Figure 6: Boat ramp with pontoon/wharf on Sullivan's Creek opposite the ANU Boathouse. (Source: ANU Heritage Office 2012)



Figure 7: View of the ANU Soil yard with mature eucalypts both inside and outside the site area. (Source: ANU Heritage Office 2012)



Figure 8: View of the ANU Soil yard with soil mounds and link fencing. (Source: ANU Heritage Office. 2012)

Management Issues

Constraints and Opportunities

As The Boathouse is of low significance and the soil yard is of neutral significance, no **constraints** are noted.

The Boatshed is ranked as being of 'Low' significance as it contributes to the overall significance/values of the ANU Acton campus, however it does not fulfil criteria for heritage listing on its own merit.

The soil yard is ranked as being of 'Neutral' significance as it does not embody, reflect or demonstrate Commonwealth or National Heritage values. The soil yard does not make any contribution to the site nor does it detract from the overall heritage values of the ANU Acton campus.

The **Tolerance for Change** heritage management tool, outlined in Section 7.6 of the ANU Acton Campus Heritage Study 2012, will assist in conserving heritage values through a process of change. The Boatshed and soil yard are able to tolerate a substantial amount of change through development. Removal of these elements is not necessary unless it allows for heritage values of the campus to be regained, reinforced or conserved.

As The Boathouse is of low significance and the soil yard is of neutral significance, no **opportunities** are noted.

Recommendations

Photographic recording for the ANU archives should be undertaken prior to substantial change to buildings or landscaping in any future development.
