

Study Item/ Area	ANU Parking Stations
Acton Campus Precinct	DICKSON & KINGSLEY Precincts
Building Nos. & Names	99. Baldessin Car Park, 106. Dickson Road Car Park, 109. Kingsley Street Car Park.

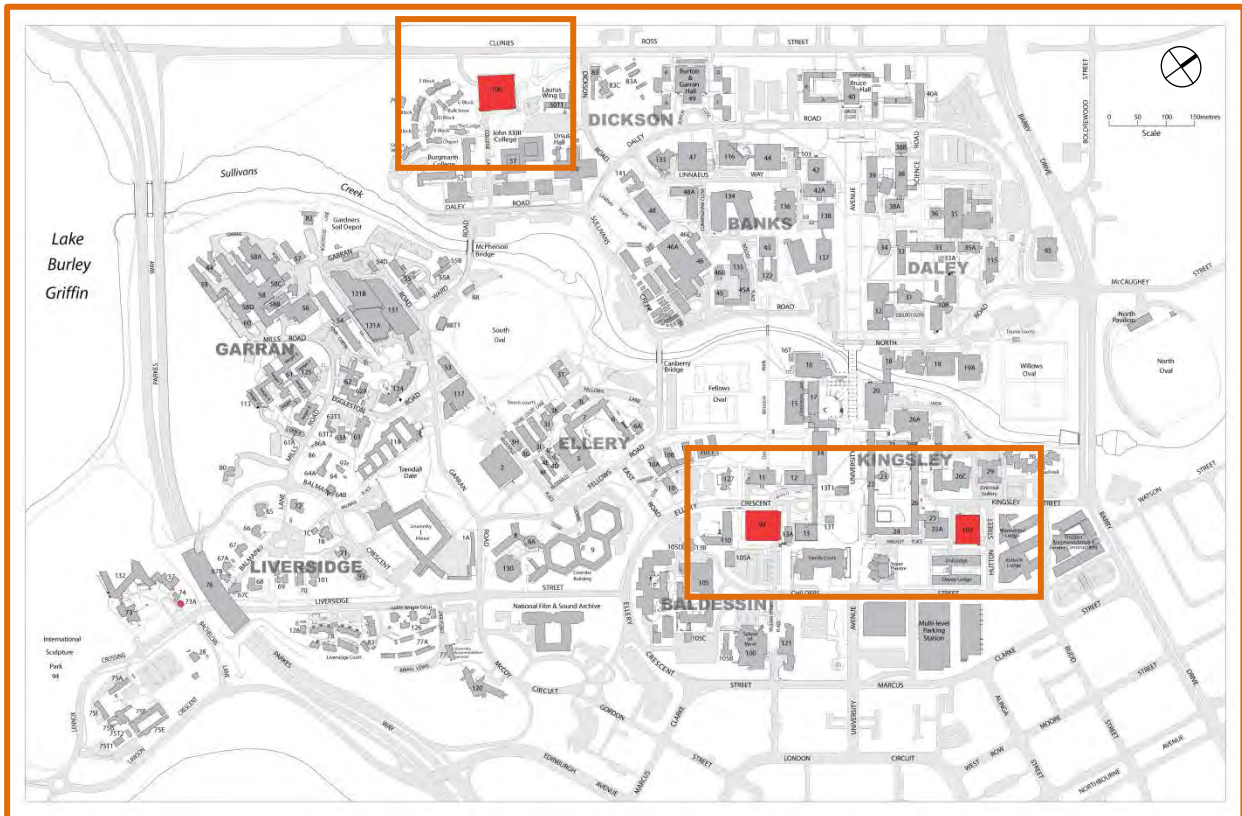


Figure 1: Location of study area within the ANU Acton Campus site.

Heritage Ranking	Parking Stations—Neutral—Do not meet criteria for Commonwealth Heritage List
Heritage Listing	The ANU Parking Stations are not individually listed on the Commonwealth Heritage List (CHL).
Condition—Date	The condition noted here is at February 2012. The Parking Stations are well maintained and are in good condition for their purpose.
Relevant Documentation	There is no current documentation for these buildings.

Context of the Buildings

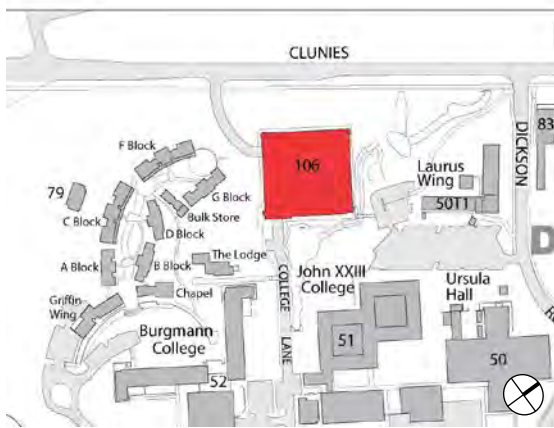


Figure 2: Dickson Road Car Park in relation to the residential colleges.

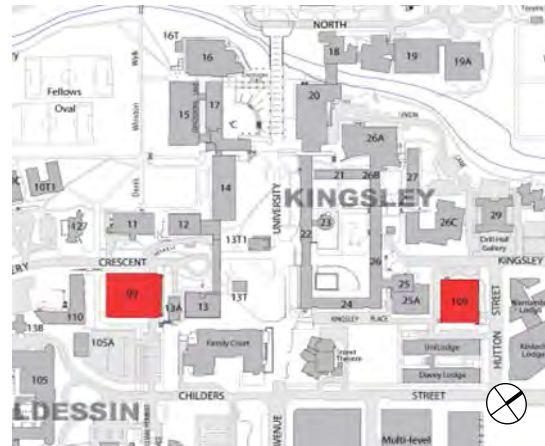


Figure 3: Baldessin and Kingsley Street Car Parks in the context of the Kingsley Precinct.

Brief Historical Overview

Several multistorey parking stations were constructed to meet the increasing need of the campus for car space. Three major sites were built over a ten year period. Firstly at Kingsley Street in 1993, followed by the Baldessin Car Park in 2003 and finally the Dickson Car Park in 2005. These buildings currently service both staff and students of the ANU.

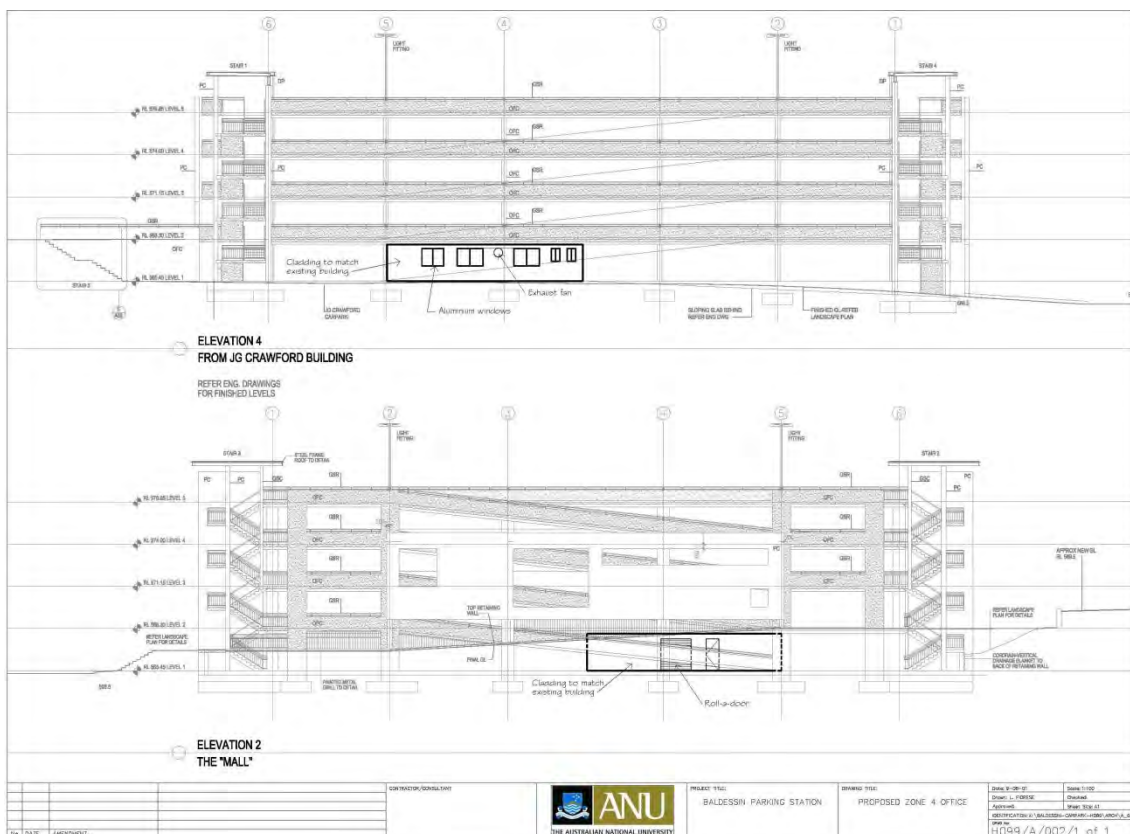


Figure 4: Architectural plans for the Baldessin Parking Station Building, August 2001.

Description of Parking Stations

Buildings

The Parking Stations follow a generally uniform design with construction of steel reinforced concrete pillars and floors. Metalwork plumbing and roofing with security features attached to all entrances and exits including boom gates and card access panels.

Landscape

The landscape is well kept with a mixture of native and exotic plantings. The Dickson Road Parking Station features a native ecosystem nearby.

Significance Assessment against the Commonwealth Heritage criteria

Statement of Significance

N/A

Criteria	Assessment
(a) Historic The place has significant heritage value because of the place's importance in the course, or pattern, of Australia's natural or cultural history.	The Parking Stations do not meet CHL criterion (a) for historic values.
(b) Rarity The place has significant heritage values because of the place's possession of uncommon, rare or endangered aspects of Australia's natural or cultural history.	The Parking Stations do not meet CHL criterion (b) for rarity values.
(c) Scientific The place has significant heritage value because of the place's potential to yield information that will contribute to an understanding of Australia's natural or cultural history.	The Parking Stations do not meet CHL criterion (c) for scientific values.

<p>(d) Representative The place has significant heritage value because of the place's importance in demonstrating the principal characteristics of: A class of Australia's natural or cultural places; or A class of Australia's natural or cultural environments.</p>	<p>The Parking Stations do not meet CHL criterion (d) for representative values.</p>
<p>(e) Aesthetic The place has significant heritage value because of the place's importance in exhibiting particular aesthetic characteristics valued by a community or cultural group.</p>	<p>The Parking Stations do not meet CHL criterion (e) for aesthetic values.</p>
<p>(f) Creative/Technical The place has significant heritage value because of the place's importance in demonstrating a high degree of creative or technical achievement at a particular period.</p>	<p>The Parking Stations do not meet CHL criterion (f) for creative/technical values.</p>
<p>(g) Social The place has significant heritage value because of the place's strong or special association with a particular community or cultural group for social, cultural or spiritual reasons.</p>	<p>The Parking Stations do not meet CHL criterion (g) for social values.</p>

<p>(h) Associative The place has significant heritage value because of the place's special association with the life or works of a person, or group of persons, of importance in Australia's natural and cultural history.</p>	<p>The Parking Stations do not meet CHL criterion (h) for associative values.</p>
<p>(i) Indigenous The place has significant heritage value because of the place's importance as part of Indigenous tradition.</p>	<p>The Parking Stations do not meet CHL criterion (i) for Indigenous values.</p>

Photographs



Figure 5: View of the Baldessin Parking Station. (Source: ANU Heritage Office 2012.)



Figure 6: Lower entrance to the Baldessin Parking Station including security facilities. (Source: ANU Heritage Office 2012.)



Figure 7: Main entrance to Dickson Precinct Parking Station. (ANU Heritage Office. 2012)

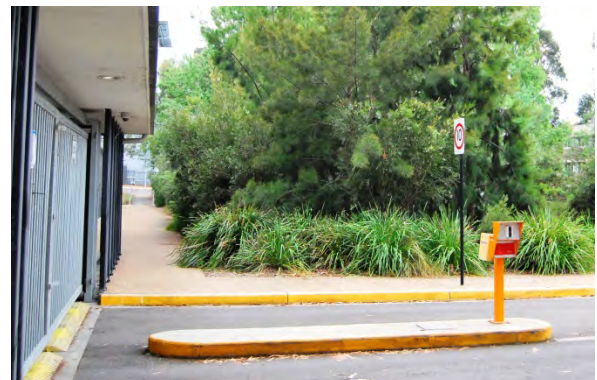


Figure 8: Security gates of Dickson precinct Parking Station including nearby eco system. (Source: ANU Heritage Office 2012)

Management Issues

Constraints and Opportunities

As the Parking Stations are of neutral significance, no **constraints** are noted.

The Parking Stations are ranked as being of 'Neutral' significance as they do not embody, reflect or demonstrate Commonwealth or National Heritage values. The Parking Stations do not make any contribution to the site nor do they detract from the overall heritage values of the ANU Acton campus.

The **Tolerance for Change** heritage management tool, outlined in Section 7.6 of the ANU Acton Campus Heritage Study 2012, will assist in conserving heritage values through a process of change. The Parking Stations are able to tolerate a substantial amount of change through development. Removal of neutral elements is not necessary unless it allows for heritage values of the campus to be regained, reinforced or conserved.

As the Parking Stations are of neutral significance, no **opportunities** are noted.

Recommendations

Photographic recording for the ANU archives should be undertaken prior to substantial change to buildings or landscaping in any future development.
